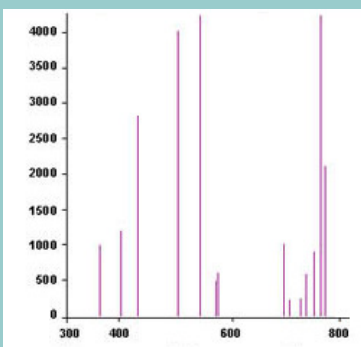


LLE-1 Low Pressure Mercury Lamp



- *Frosted glass & diaphragm supplied*
- *Output of 20 W*
- *Very long lifetime*



Mercury lamps emit several different wavelengths.

A low pressure mercury lamp is one of the most popular discharge lamps in laboratories, frequently used for wavelength calibration of optical measuring instruments. They're comparatively efficient, good color rendition, very long lifetime make this type of traditional lamp ideal source for various applications.

Low pressure mercury lamps use mercury in an excited state to produce light. The arc discharge is generally confined to a little fused quartz tube mounted within a larger borosilicate glass bulb. As the main arc strikes and the gas heats up and increases in pressure, the light becomes visible and then appears more white.

Specifications

Rating Voltage	220/110 V
Power	20 W
Operating Voltage	20 V
Operating Current	1.3 A
Dimension	28 mm in OD, 155 mm in length